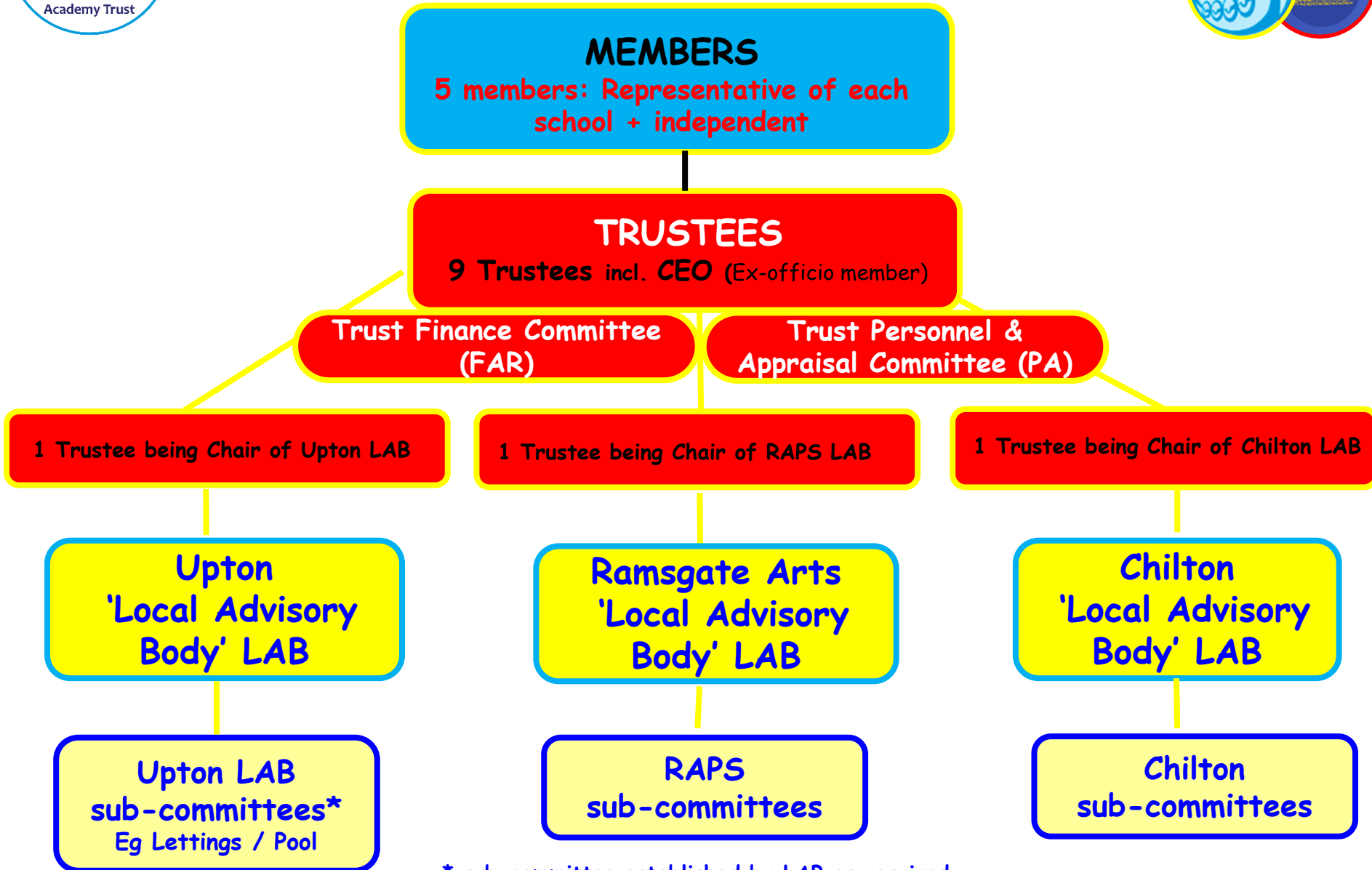




VIKING ACADEMY TRUST

Governance Structure 2017-18

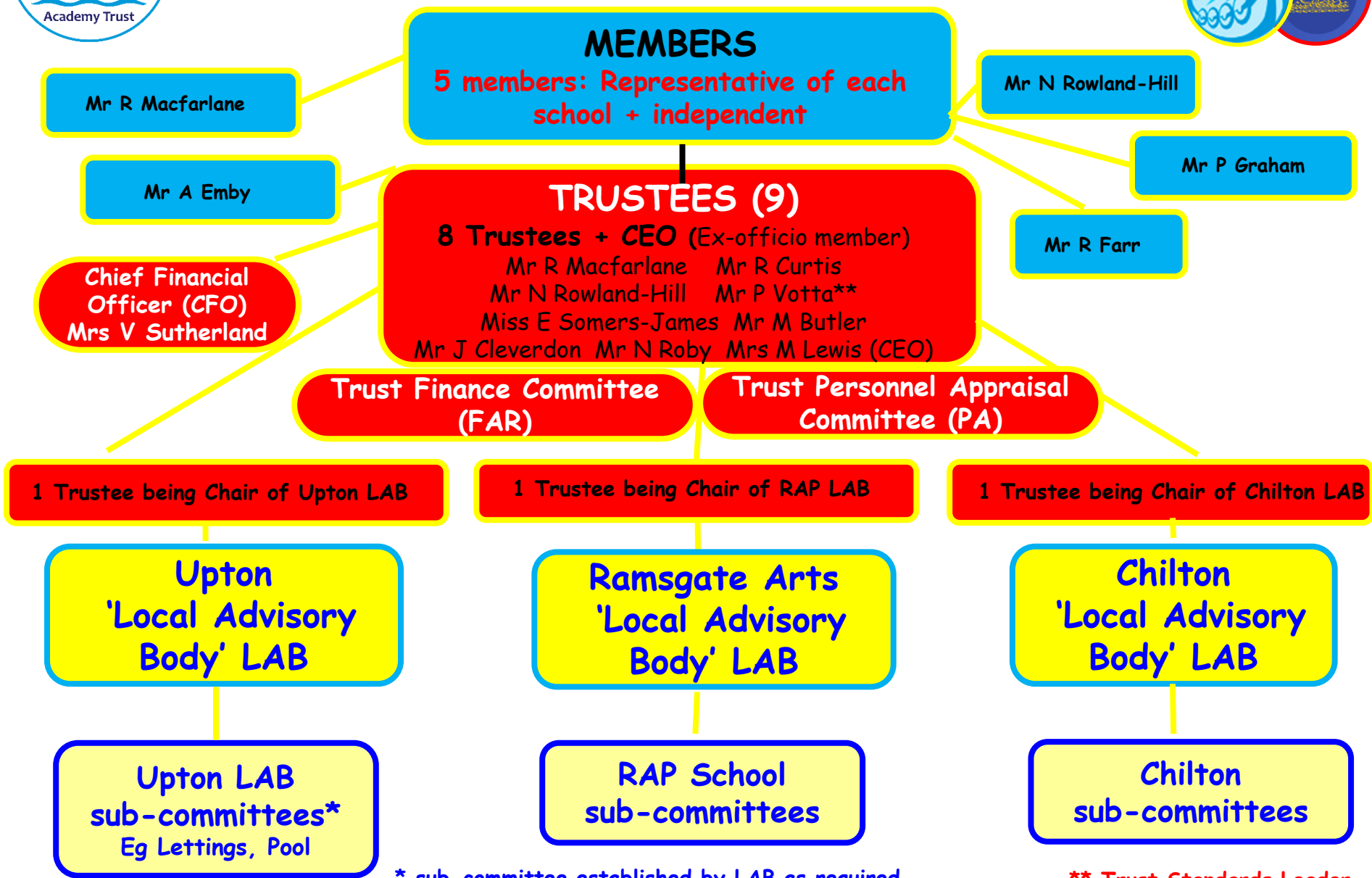


* sub-committee established by LAB as required



VIKING ACADEMY TRUST

Governance Structure 2017-18



* sub-committee established by LAB as required

** Trust Standards Leader



VIKING ACADEMY TRUST



Governance Structure Roles & Responsibilities

We recognise just how vital the role of the governance has become in raising standards.

There is only one legal entity accountable for all schools within the Multi-Academy Trust (MAT).

The MAT has one set of Articles which governs all academies within the MAT.

MEMBERS

TRUSTEES

'Local Advisory Body' LAB

Members: Academy Trusts do not have shareholders; they have members. The role and rights of members is analogous to that of shareholders. They hold the AGM and appoint Trustees.

Trustees: Work with the Leadership Team to set the strategic vision and ethos of the Trust.

Local Advisory Body LAB:

Most of the LAB will not be Trustees of the MAT and will mainly be representatives from the school. They have duties delegated to them by the Board of Trustees. It is the responsibility of the Board to ensure that they are exercising these functions in line with the relevant duties. The LABs advise and make recommendations to the Board through regular meetings with the Board's Chair and via minutes of LAB meetings. Members of LAB are 'Local Governors'.



VIKING ACADEMY TRUST

Governance Safeguarding Overview

