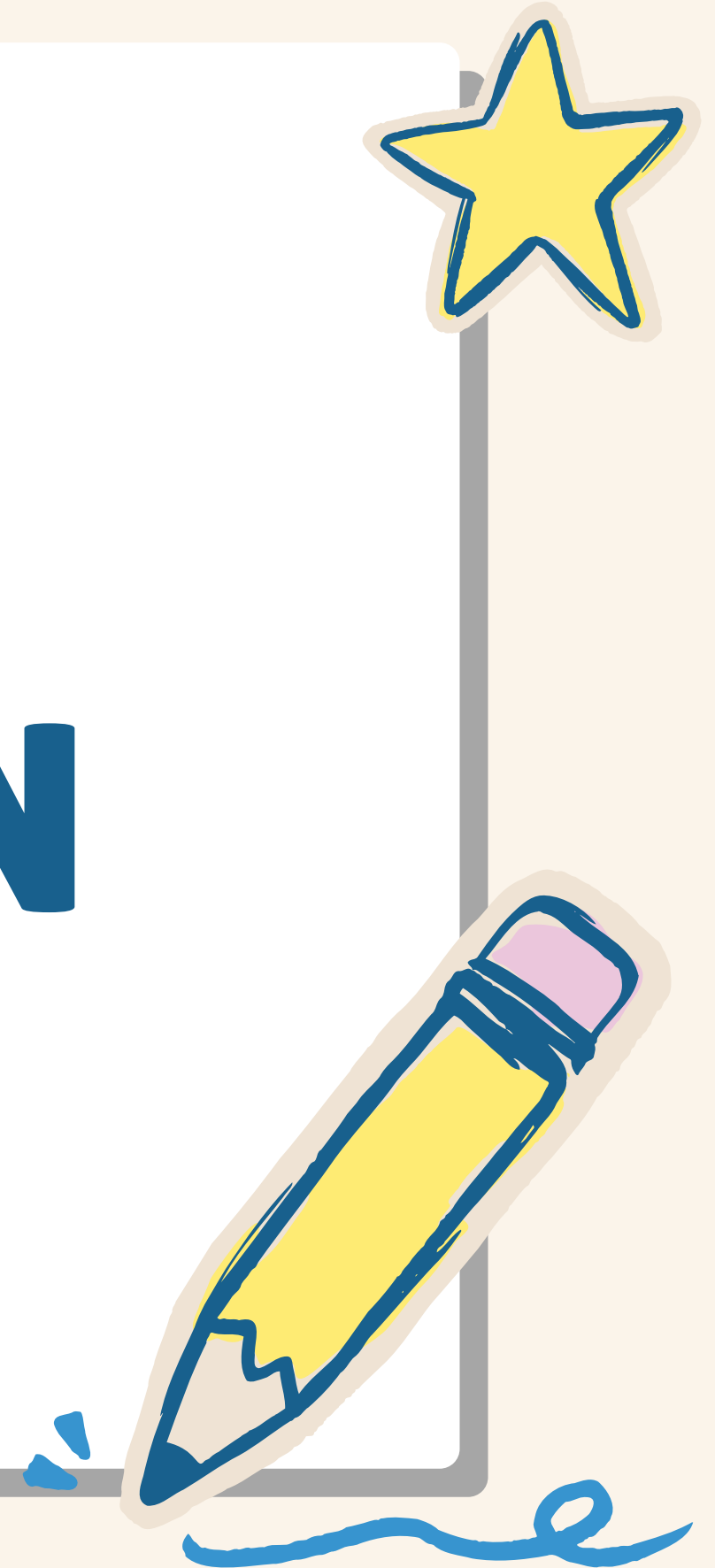


KENT TEST INFORMATION

2026



WE WILL COVER:

- 1 Registration
- 2 Preparation
- 3 Results and appeals.

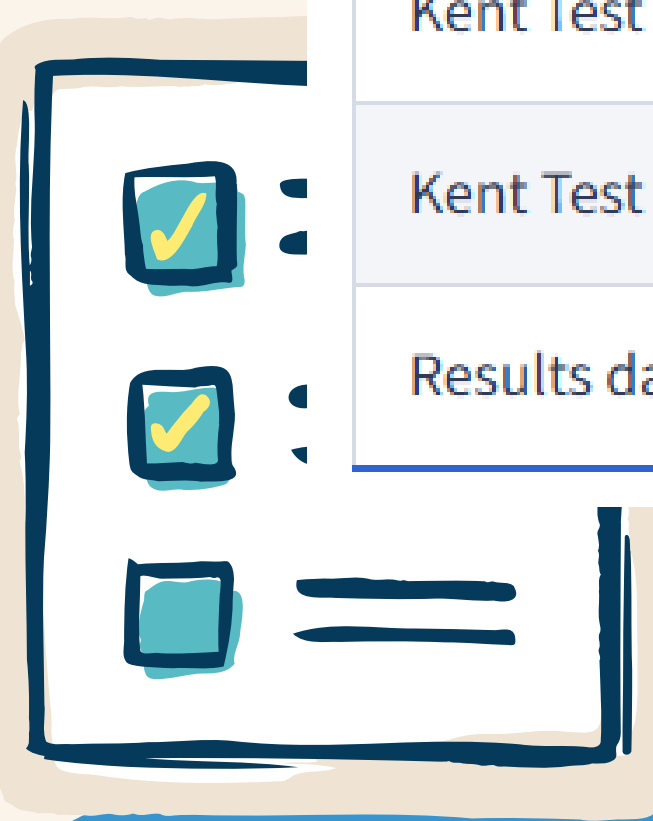


KEY DATES



Important events and dates for the Kent Test.

What happens	Date
Kent Test registration opens	Monday 1 June 2026
Kent Test registration closes	Wednesday 1 July 2026
Kent Test - for pupils who attend a Kent Primary School	Thursday 10 September 2026
Kent Test - for pupils who do not attend a Kent primary school	Weekend of 12 and 13 September 2026
Results day	Thursday 15 October 2026



REGISTRATION

Many children will find the test difficult. Grammar schools in Kent provide for children in about the top 25% of the ability range. You may want to discuss your child's academic achievement with their primary school before you decide whether to register them for the Kent Test.



Make sure you know what the admissions criteria are for the school(s) you are interested in. Or search for Kent grammar schools in our Kent schools' search.

<https://www.kent.gov.uk/education-and-children/schools/school-places/admissions-criteria>

What if my child has SEN



If your child has a disability or special educational needs which will affect their access to testing, you need to discuss this with the school SENCO before you register them for the test as the school will need to apply for any necessary access arrangements.

Requests will not be accepted after 1 July 2026.

The online registration form asks you to confirm you have discussed a request for access arrangements with your child's school.

Email kent.admissions@kent.gov.uk if you would like more information about the special arrangements process contact

Emma.Hill@uptonjunior.com

WHAT DOES THE TEST ENTAIL?



- The Kent Test papers are multiple-choice questions with a separate answer sheet.
- The first test will be an English and Maths paper and will take 1 hour.
- The English section will involve a comprehension exercise as well as some additional questions drawn from a set designed to test literacy skills.
- The second test will be a reasoning paper that will take about 1 hour. It will contain a verbal reasoning section and a non-verbal reasoning section of roughly the same length.
- The non-verbal reasoning will be split into short sections, administered and timed individually.
- There will also be a writing exercise which will not be marked but may be used by a local headteacher panel as part of the headteacher assessment stage of the process. 40 minutes will be allowed for the writing task, including 10 minutes planning time.

HOW TO PREPARE



- It is a good idea to do some familiarisation papers with your child.
- This will give you a good indication as to how your child will perform in the test.
- If you are unsure whether to put them in for the test, doing the familiarisation might help you decide.

https://www.kent.gov.uk/_data/assets/pdf_file/0006/196314/Kent-Test-familiarisation-booklet.pdf

<https://11plus.gl-assessment.co.uk/pages/free-materials>

Verbal Reasoning

In these questions, the same letter must fit into both sets of brackets, to complete the word in front of the brackets and begin the word after the brackets.

- 1 **Example**
 dis [?] urt muc [?] ole
A p **B** h **C** e **D** s **E** k

The answer is **h** (the four new words are **dish**, **hurt**, **much** and **hole**) and this has been marked on the answer sheet on page 15. Now try the practice question below:

- 1 **Practice**
 rea [?] ace fee [?] ost
A f **B** r **C** p **D** m **E** l

Work out the correct answer and mark it on the answer sheet.

In these questions, there are two pairs of words.
 Only one of the five possible answers will go equally well with both these pairs.

- 2 **Example**
 (fall stumble) (journey outing)
A holiday **B** travel **C** drop **D** trip **E** trap

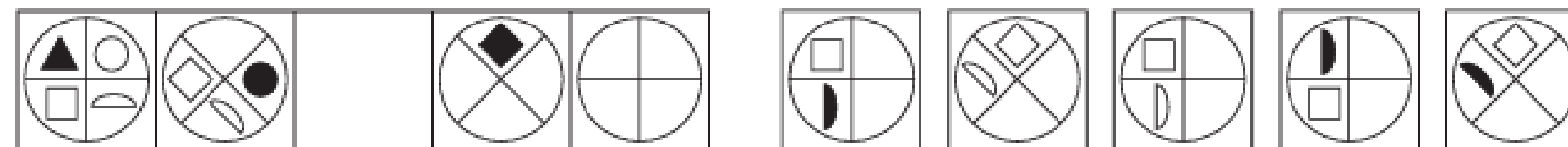
Practice

I think of a number.
 I then double it.
 Next I subtract 6.
 The answer is 14.

What was the number I started with?

- A** 16 **B** 22 **C** 4 **D** 40 **E** 10

Practice



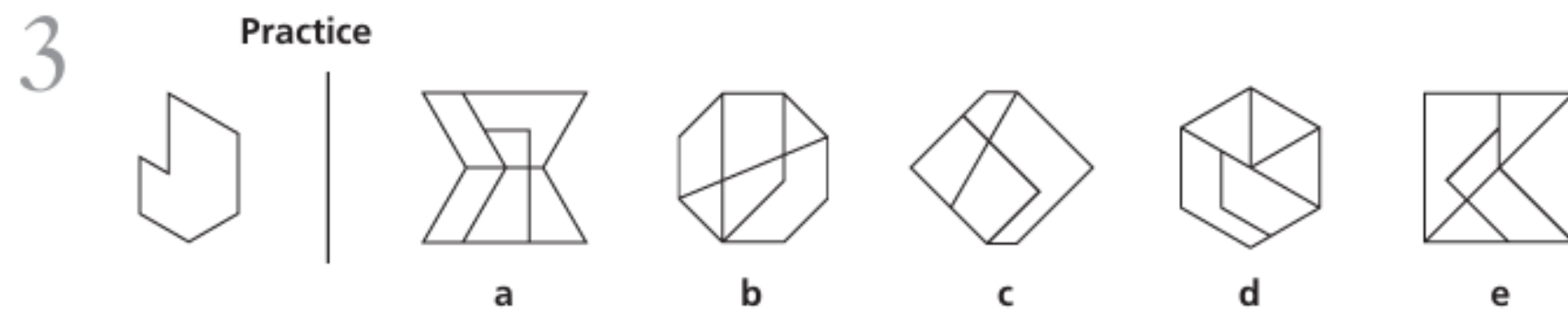
- a** **b** **c** **d** **e**

Example

The letter was stained and crumpled but in the bright moonlight I could still

- A** reed **B** wrote **C** red **D** read **E** write almost every word.

Now try the practice question below:



Work out the correct answer and mark it on the answer sheet.

RESULTS



If you gave an email address when you registered, your Kent Test result will be emailed to you on Thursday 15 October 2026. They can only send the results to the email address used to register your child.

If you did not give an email address, they will post your child's result to you on results day by first class post. If you have not received it, you can ask your child's primary school for their test scores the day after results go out.

SCORES



Your child will get 3 standardised scores, one for English, one for maths and one for reasoning, and a total (aggregate) score.

Standardisation is a statistical process which compares your child's performance with the average performance of other children in each test. A slight adjustment is made to take account of each child's age so that the youngest are not at a disadvantage.

Last year, to be given a grammar school assessment, children needed a total score of 332 or more, with no single score lower than 108. Test scores range from 69 to 141. The highest possible total score is 423.

The grammar school threshold for 2026 will be available in October 2026.

WHAT IF MY CHILD DOESN'T PASS?

If your child was not tested or was not assessed as suitable for a Kent grammar school, you can still apply for a Kent grammar school but your application to that school will be refused when school places are offered on 1 March 2027.

You will then have the right to [appeal](#) to explain why you think it is a suitable option for your child.



APPEALS



It is recommended you still accept the place your child has been offered. This will not affect your appeal and will guarantee your child has a school place if your appeal is unsuccessful.

The school may have already completed a headteacher appeal if your child was close to passing.

For parent appeals, the school may not support an appeal to a grammar school if we do not feel there is sufficient evidence to do so. This includes work in books and previous results from assessments.

Applying to a grammar school



You will be able to name up to 4 secondary school preferences. [Read more about how to apply for a secondary school place.](#)

- Any Kent grammar school you apply for will consider your application, but this does not guarantee your child will be offered a place.
 - Grammar schools are often oversubscribed, meaning they receive more applications than there are available places. Schools use their [admissions criteria](#) to rank all applicants in priority order, so it's important to read the admissions criteria for schools you are interested in.
- A Kent grammar school can only consider your child for a place if you have named it on your application and your child has been tested and assessed suitable for admission.
- If your child is not offered a place at the school, you will be able to [appeal](#) to an independent appeal panel and may be able to join the school's [waiting list](#).

Access Arrangements



ASC/ASD and ADHD

- Separate or smaller room
- Stop the clock rest breaks if needed
- Support of a prompt
- Specialist equipment (eg: fidget toys, timers, ear defenders, move'n'sit cushion)
- Use of a laptop for the writing exercise, and longer to complete it if appropriate

Diabetes or other medical conditions

- Separate or smaller room
- Easy access to the lavatory
- Easy access to water / snacks as appropriate
- Stop the clock rest breaks to accommodate blood tests/treatment

If a candidate is unwell on the test date, they can be tested later, or can leave between papers and resume testing when well.

Specific Learning Difficulties

- Where appropriate we will offer longer to complete the writing task and the option of using a laptop/tablet.
- Permission is not required for the use of coloured filters or lenses.
- Support of a reader for occasional words (they cannot read the English passage)
- Support of a scribe, or for pupils to record answers directly on the question paper.
- In a small number of cases, we may offer rest breaks, or a little longer to attempt tests.

Physical or Sensory Disability

- Enlarged papers (a large print booklet is available in B4 size, approximately 14pt print)
- Support of a scribe or permission to answer on the question paper
- Use of specialist equipment
- Stop the clock rest breaks
- Longer to attempt the papers (max allowed is 25%) and the writing task